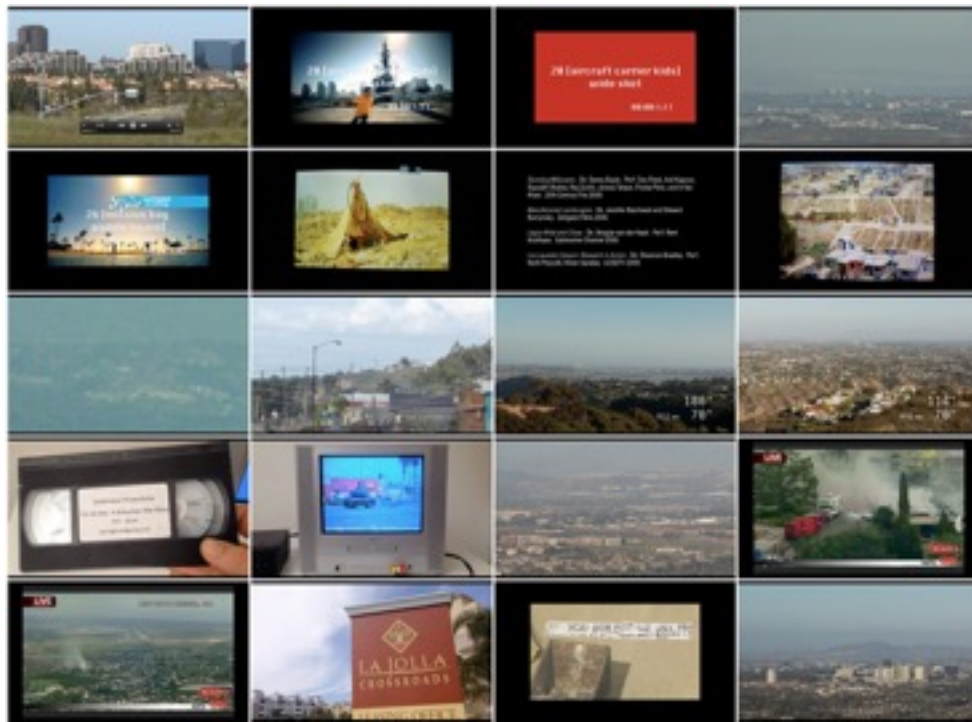


VIS 175 EDITING: THEORY AND PRODUCTION | SPRING 2017

SHOT BY SHOT PRESENTATION



Chose a scene from a film of about 10 to 15 shots. For this scene:

Identify the type of shot.

Explain the relationship of each shot to the shot that comes immediately after (why was the cut made when it was, and how does it establish meaning? What does it "do"?)

Discuss the overarching meaning of the sequence of shots, with consideration for issues of timing (tempo, rhythm, and pacing), the larger context of the entire film / piece, and any other special considerations specific to the scene you have chosen.

Present the scene to the class, and present a pdf (powerpoint) made up a still frame from each shot. The presentation will progress by you presenting the shot, explaining what it's doing in the context of the scene, explaining the relationship between successive shots, and finally concluding with a discussion of the overall meaning of the scene.

Presentations could take the form of a "video essay."

Presentations will be evaluated on thoroughness, relevance of your thesis to the chosen scene, and lastly on the quality of your insight.

DUE:

Declaration of the film and scene to plan to analyze is DUE on Wednesday, 4/19 (Week 3)

A presentation schedule will be established, progressing from week 5 through week 8.