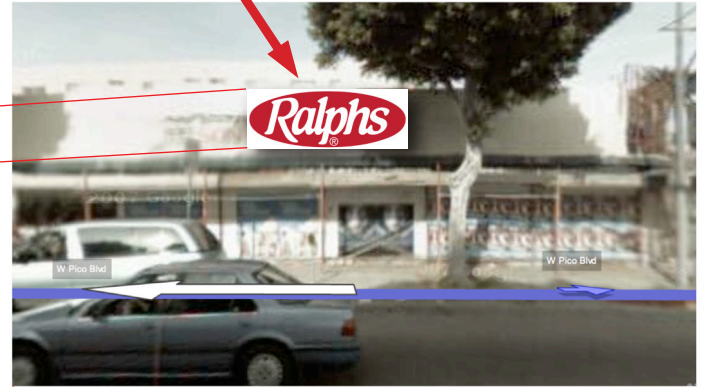




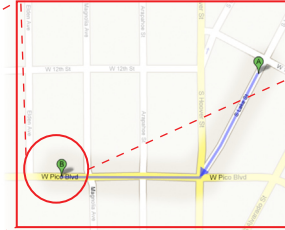
Original location: Ralph's supermarket



Walkable location: Ralph's supermarket



Typical 6-minute drive to supermarket in LA



Same point of origin, 6-minute walk

*Untitled (LA auto-space)*

Transposing the transit routines of LA residents into a walkable timeframe might enable a cartography that simultaneously reflects a future of resource scarcity and the relationship traversable space has with our psyches. My task for the summer of 2008 is to articulate this, and to produce a situation that rehashes the automotive status quo of Los Angeles.

Charles G Miller July 2008

